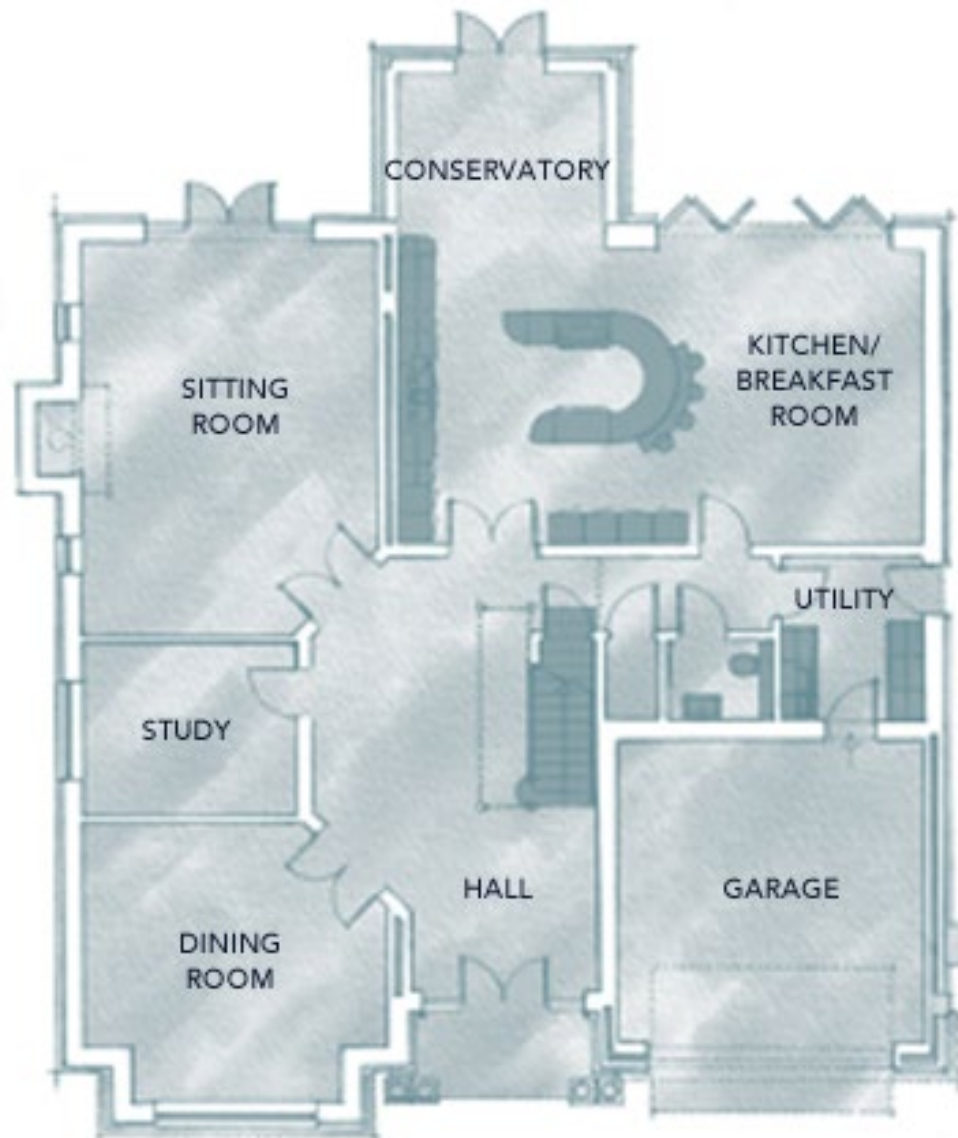


# The Firs - Ground Floor Plan



## GROUND FLOOR

### KITCHEN/ BREAKFAST ROOM

9.34m x 8.60m  
30' 8" x 28' 3"

### SITTING ROOM

7.04m x 5.32m  
23' 1" x 17' 5"

### STUDY

3.86m x 3.06m  
12' 8" x 10' 0"

### DINING ROOM

5.45m x 4.98m  
17' 11" x 16' 4"

### HALL

7.68m x 5.08m  
25' 2" x 16' 8"

### GARAGE

5.49m x 5.39m  
18' 0" x 17' 8"

# The Firs - First Floor Plan



## FIRST FLOOR

### MASTER BEDROOM

6.23m x 5.32m

20' 5" x 17' 5"

### BEDROOM 2

5.32m x 5.26m

17' 5" x 17' 3"

### BEDROOM 3

5.45m x 3.98m

17' 11" x 13' 1"

### BEDROOM 4

5.45m x 3.36m

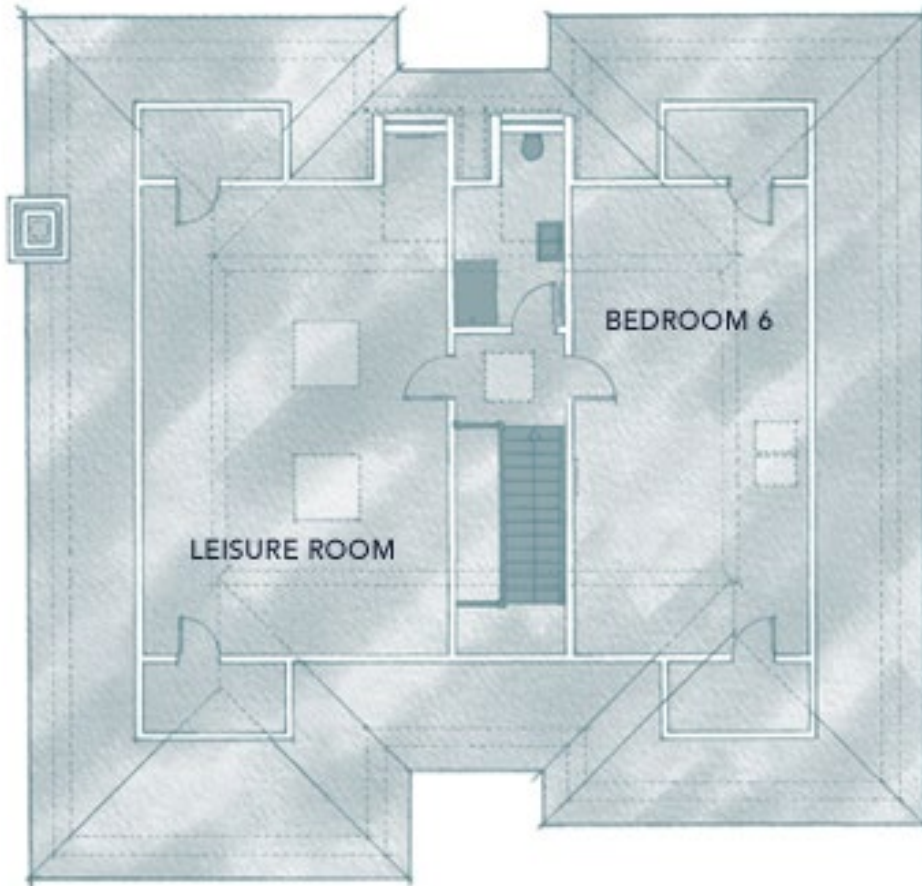
17' 11" x 11' 0"

### BEDROOM 5

3.54m x 3.06m

11' 7" x 10' 0"

# The Firs - Second Floor Plan



## SECOND FLOOR

### BEDROOM 6

8.62m x 4.29m

28' 3" x 14' 1"

### LEISURE ROOM

8.62m x 5.65m

28' 3" x 18' 6"